

COLOR GUIDE



INSULATED METAL PANELS

**COLORS FOR THE  
ARCHITECTURAL MARKET**



PIONEERING INSULATED METAL PANEL TECHNOLOGY

## STANDARD EXTERIOR COLORS

Fluropon®: Full-Strength 70% PVDF Fluoropolymer Coating



Polar White

R: .70 E: .86 SRI: 85



Sandstone

R: .60 E: .86 SRI: 71



Regal Gray

R: .55 E: .86 SRI: 64



Desert Beige\*

R: .47 E: .86 SRI: 53



Dark Bronze\*

R: .34 E: .87 SRI: 36

## PREMIUM I EXTERIOR COLORS

Fluropon®: Full-Strength 70% PVDF Fluoropolymer Coating



Colonial Red

R: .33 E: .87 SRI: 35



Zinc Gray

R: .36 E: .87 SRI: 39



Bright Red

R: .44 E: .86 SRI: 49



Parchment

R: .50 E: .86 SRI: 57



Terra-Cotta

R: .38 E: .87 SRI: 41



Weathered Copper

R: .36 E: .86 SRI: 38



Ash Gray

R: .50 E: .86 SRI: 57



Aegean Blue

R: .29 E: .86 SRI: 29



Regal Blue

R: .30 E: .85 SRI: 30



Pewter

R: .38 E: .87 SRI: 41



Tahoe Blue

R: .30 E: .86 SRI: 30



Leaf Green

R: .30 E: .86 SRI: 30



Hemlock Green

R: .30 E: .86 SRI: 30



Forest Green

R: .29 E: .87 SRI: 29



Acadian Green

R: .41 E: .87 SRI: 45

## PREMIUM II METALLIC & PEARLESCENT EXTERIOR COLORS

Fluropon Classic® & Fluropon Classic® II: Full-Strength 70% PVDF Fluoropolymer Coatings



Weathered Zinc\*\*

R: .38 E: .84 SRI: 41



Copper Penny\*\*

R: .50 E: .85 SRI: 57



Silver\*\*

R: .53 E: .79 SRI: 59



Champagne\*\*

R: .40 E: .85 SRI: 43



Zactique\*\*

R: .35 E: .84 SRI: 36

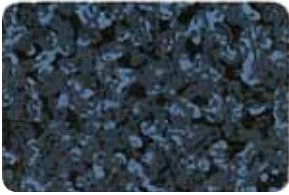
**R** = Initial Solar Reflectivity (ASTM E-903, C-1549)  
**E** = Emissivity (ASTM C-1371)  
**SRI** = Solar Reflective Index (ASTM E-1980, based on medium wind speed)

\* Desert Beige and Dark Bronze are available standard colors in 26 Ga. and 24 Ga. steel only. These colors are available in 22 Ga. steel as Premium I colors only.

\*\* Metallic paint finishes will exhibit color shift, shade variances, striations and longitudinal patterning that are inherent characteristics and are not a product defect or cause for rejection.

**PREMIUM III DESIGN SERIES** EXTERIOR COLORS

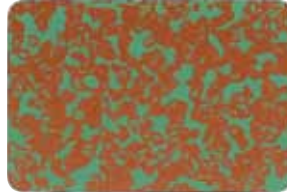
Full-Strength 70% PVDF Fluoropolymer Coatings



Bay Harbor Blue  
R: .28 E: .87 SRI: 28



Copper Tapestry  
R: .29 E: .87 SRI: 29



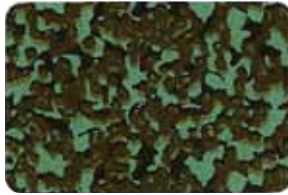
Copper Verdigris  
R: .34 E: .88 SRI: 37



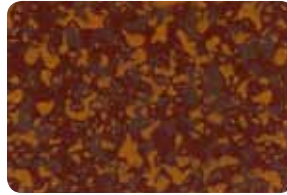
Dark Terra-Cotta  
R: .31 E: .88 SRI: 32



Fresh Rust  
R: .34 E: .88 SRI: 36



Northwest Slate  
R: .28 E: .87 SRI: 28



Sedona Rust  
R: .30 E: .87 SRI: 31



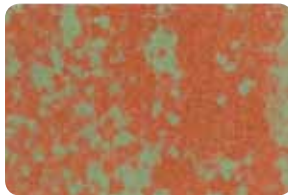
Twilight Black  
R: .27 E: .87 SRI: 27

**PREMIUM III WEATHERED METAL SERIES** EXTERIOR COLORS

Full-Strength 70% PVDF Fluoropolymer Coatings



COPPER-TEN™ Raw  
R: .45 E: .88 SRI: 51



COPPER-TEN™ Robust  
R: .44 E: .88 SRI: 50



COR-TEN AZP® Raw  
R: .32 E: .89 SRI: 34



COR-TEN AZP® Robust  
R: .32 E: .85 SRI: 32



GALV-TEN™ Raw  
R: .49 E: .84 SRI: 55



GALV-TEN™ Robust  
R: .52 E: .86 SRI: 60



Vintage®  
R: .28 E: .70 SRI: 20

**PREMIUM III WOODGRAIN METAL SERIES** INTERIOR COLORS

Full-Strength 70% PVDF Fluoropolymer Coatings



Pau Ferro



Rustic Cedar



Walnut Print

No warranty available on  
Premium III Woodgrain  
Metal Series interior colors

## TUFF WALL® STUCCO-LIKE METAL SERIES EXTERIOR COLORS

Tuff Cote® Fiber-Reinforced Polymer Coating



Antique Bronze

R: .26 E: .86 SRI: 25



Light Gray

R: .35 E: .86 SRI: 37



Light Stone

R: .51 E: .85 SRI: 58



Medium Beige

R: .39 E: .86 SRI: 42



Surrey Beige

R: .32 E: .87 SRI: 33



Stucco White

R: .64 E: .86 SRI: 77



Warm Limestone

R: .45 E: .87 SRI: 51

## TUFF-CAST™ FINISHED PRECAST CONCRETE METAL SERIES EXTERIOR COLORS

Tuff Cote® Fiber-Reinforced Polymer Coating



Antique Bronze

R: .26 E: .86 SRI: 25



Light Gray

R: .35 E: .86 SRI: 37



Light Stone

R: .51 E: .85 SRI: 58



Medium Beige

R: .39 E: .86 SRI: 42



Surrey Beige

R: .32 E: .87 SRI: 33



Stucco White

R: .64 E: .86 SRI: 77



Warm Limestone

R: .45 E: .87 SRI: 51

All Metl-Span colors are formulated to provide maximum energy-efficiency and solar reflectivity. All standard available Premium I and Premium II colors have been formulated for maximum solar reflectance.

Prices may vary by color, gauge and quantity of metal. Please contact your Metl-Span representative for complete information. All colors shown here approximate actual finish colors as accurately as possible.



PIONEERING INSULATED  
METAL PANEL TECHNOLOGY

1720 Lakepointe Drive  
Suite #101  
Lewisville, Texas 75057

TOLL-FREE: 877.585.9969

TEL: 972.221.6656

FAX: 972.420.9382

EMAIL: [panel@metlspan.com](mailto:panel@metlspan.com)

WEB: [metlspan.com](http://metlspan.com)

Strategically located coast-to-coast in  
Texas, Virginia, Nevada & Indiana

ENVIRONMENTALLY  
CONNECTED



ENERGY STAR® designation is valid in the U.S. only.

Fluropon® and Fluropon Classic® are registered trademarks of Valspar. COR-TEN AZP® is a registered trademark of United States Steel Corporation. Vintage® is a registered trademark of Steelscape, Inc.